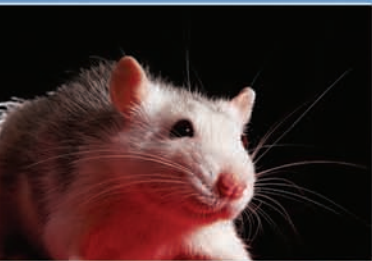




# IK-HR1S

ULTRA COMPACT HD-SDI  
1080i/720p HI-DEF CAMERA



## Features

- Ultra compact (approx 1.75" x 1.75" x 3") one-piece system
- Output selectable between 1080i and 720p at 50 or 60 Hz Video
- Utilizes 1/3" CMOS 2.1 megapixel sensor
- On-screen menu
- Weighs only 4.3 oz. (without lens)
- HD-SDI Video Output
- Auto and manual white balance
- Auto and manual electronic shutter
- C-mount lens ready

## Applications

- Broadcast
  - sports, entertainment, wildlife, reality TV, head-cam, news-copter
- Scientific imaging /diagnostics
- Homeland security

## One-Piece 1080i/720p High Definition Camera.

Toshiba's new IK-HR1S color camera provides incredible high definition video with the flexibility of switchable 1080i or 720p output. This compact, one-piece camera is ideal for high speed and broadcast imaging, producing little or no motion artifacts. From land, air or sea, let Toshiba bring your project to HD life.

**TOSHIBA**  
Leading Innovation >>>

# IK-HR1S 1080i / 720p SWITCHABLE Hi-Def CAMERA

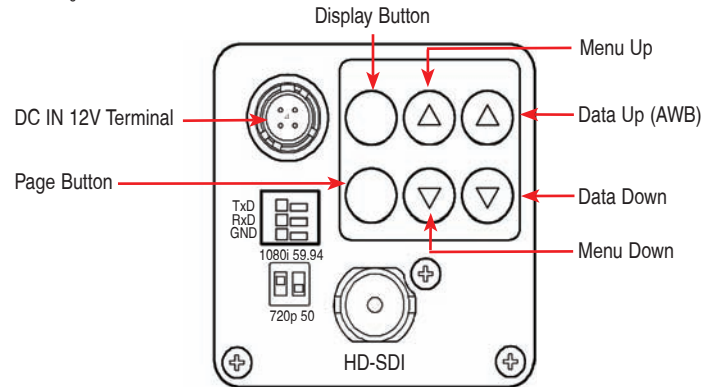
## PERFORMANCE SPECIFICATIONS

Power Requirements	12 VDC ± 10% DCIN connector (4pin)
Power Consumption	Approx. 3.5 watts
Image Sensor	1/3" progressive scan CMOS
Output Pixels	Horizontal: 1920, Vertical: 1080
Scanning System Sync / Freq	Progressive (720p)/Interlaced (1080i) Switchable 720p @ 60 fps; 1080i @ 30 fps H: 33.716 kHz, V: 59.94 Hz (1080/59.94i setting) H: 28.125 kHz, V: 50 Hz (1080/50i setting) H: 44.955 kHz, V: 59.94 Hz (720/59.94p setting) H: 37.500 kHz, V: 50 Hz (720/50p setting)
Sensitivity	f/4 standard (2000 lux, 3000K)
Min. Illumination	8 lux standard (50 IRE, f1.4, gain + 18 dB)
Frame Rate	30 fps (1080i), 60 fps (720p)
Video Signal Output	HD-SDI (SMPTE292M), 0.8 V (p-p) standard 75 ohms unbalanced BNC connector
Sync. System	Internal
Dimensions (excluding protrusions)	44(W) x 44(H) x 78(D) mm (1.73"(W) x 1.73"(H) x 3.07"(D))
Weight	Approx. 150g (0.33lbs)
Operating Temperature	0°C to + 40°C (32°F to 104°F)
Storage Temperature	-20°C to + 60°C (-4°F to 140°F)
Humidity	90% or less (non-condensing)

## SPECIFICATION - FEATURES

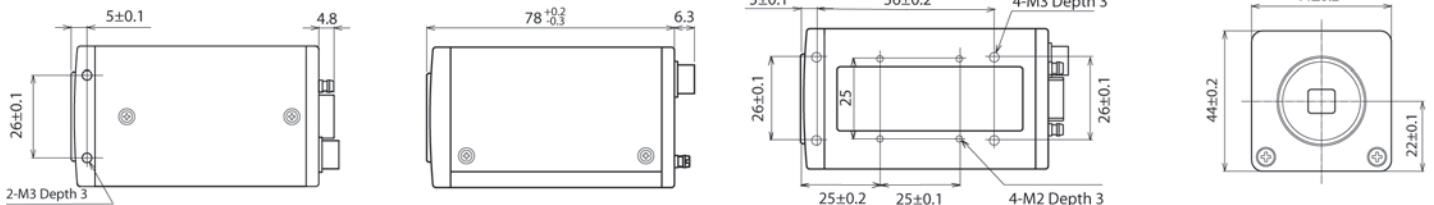
Shutter	Manual – Off (1/60s), 1/100s, 1/125s, 1/250s, 1/500s, 1/1000s, 1/2000s, 1/4000s Auto Level – range of -100 to 100 Synchronized Scan – Set by horizontal scanning time
Gain	MANUAL (0dB to 18dB), OFF (0dB)
White Balance	AWB (Automatic White Balance) ATW (Automatic Tracking White Balance) Manual (Manually Adjustable)
Gamma	OFF / MANUAL (-10 to 10)
Scene File Setting	5 Files A/B/C/D/E
Remote Control	RS-232C: Baud rate 9600bps/19200bps

Design and specifications are subject to change without notice.

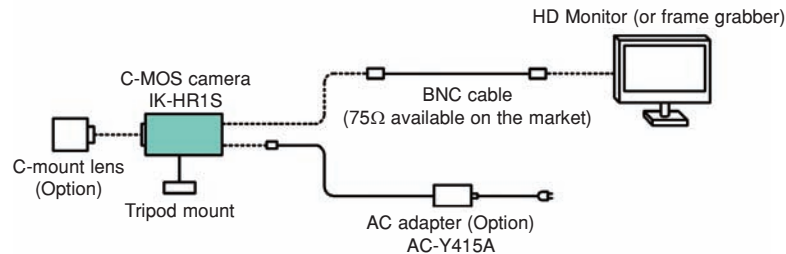


## DIMENSIONS

Measurements in Millimeters



## CONNECTIONS FOR DIGITAL MONITORING/RECORDING



**TOSHIBA**  
Leading Innovation >>>

Toshiba America Information Systems, Inc.  
Imaging Systems Division  
9740 Irvine Boulevard, Irvine, California 92618  
www.toshibacameras.com

© 2009-2014 Toshiba America Information Systems, Inc. All rights reserved. All products and names mentioned are the property of their respective owners. While Toshiba has made every effort at the time of publication to ensure the accuracy of the information provided herein, product specifications, configurations, prices, system/component/options availability are all subject to change without notice.

This Class A digital apparatus complies with Canadian ICES-003.

REFER TO OUR WEBSITE FOR THE LATEST UPDATES.

IKHR1S 05-14 v2